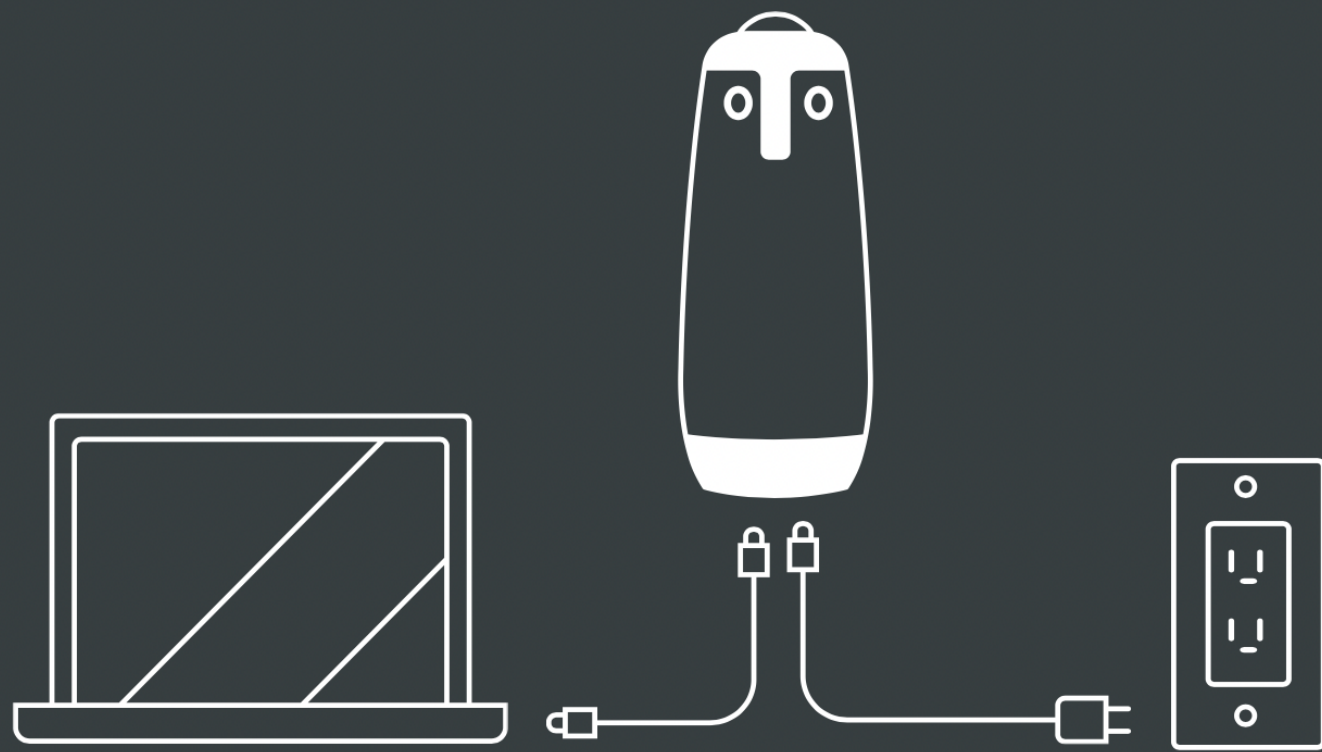




SETTING UP THE OWL

A COMPREHENSIVE GUIDE

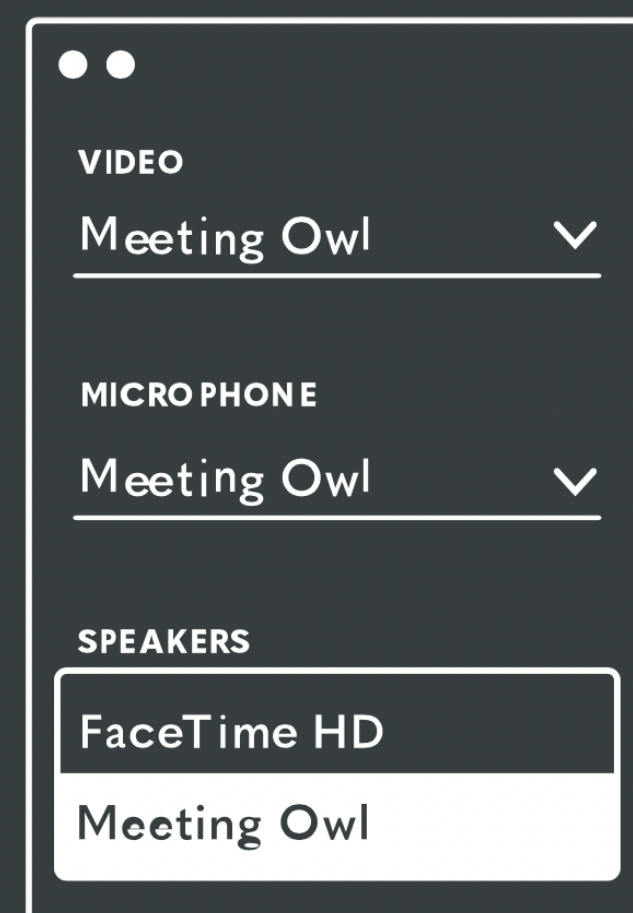


1

Turn the Owl over and plug in the USB cable and power adapter. Wait for the owl to "hoot"

2

Load your video conferencing platform and choose the Meeting Owl for audio and video



3

The Owl is ready to use! The Owl's eyes will light up when video is being streamed